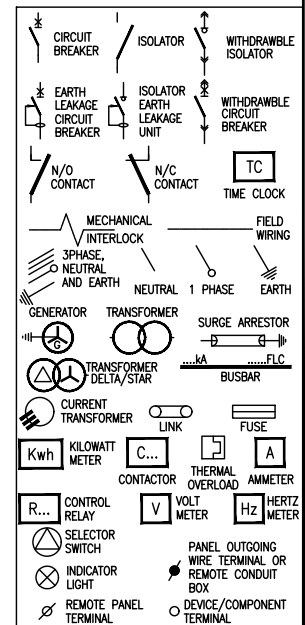
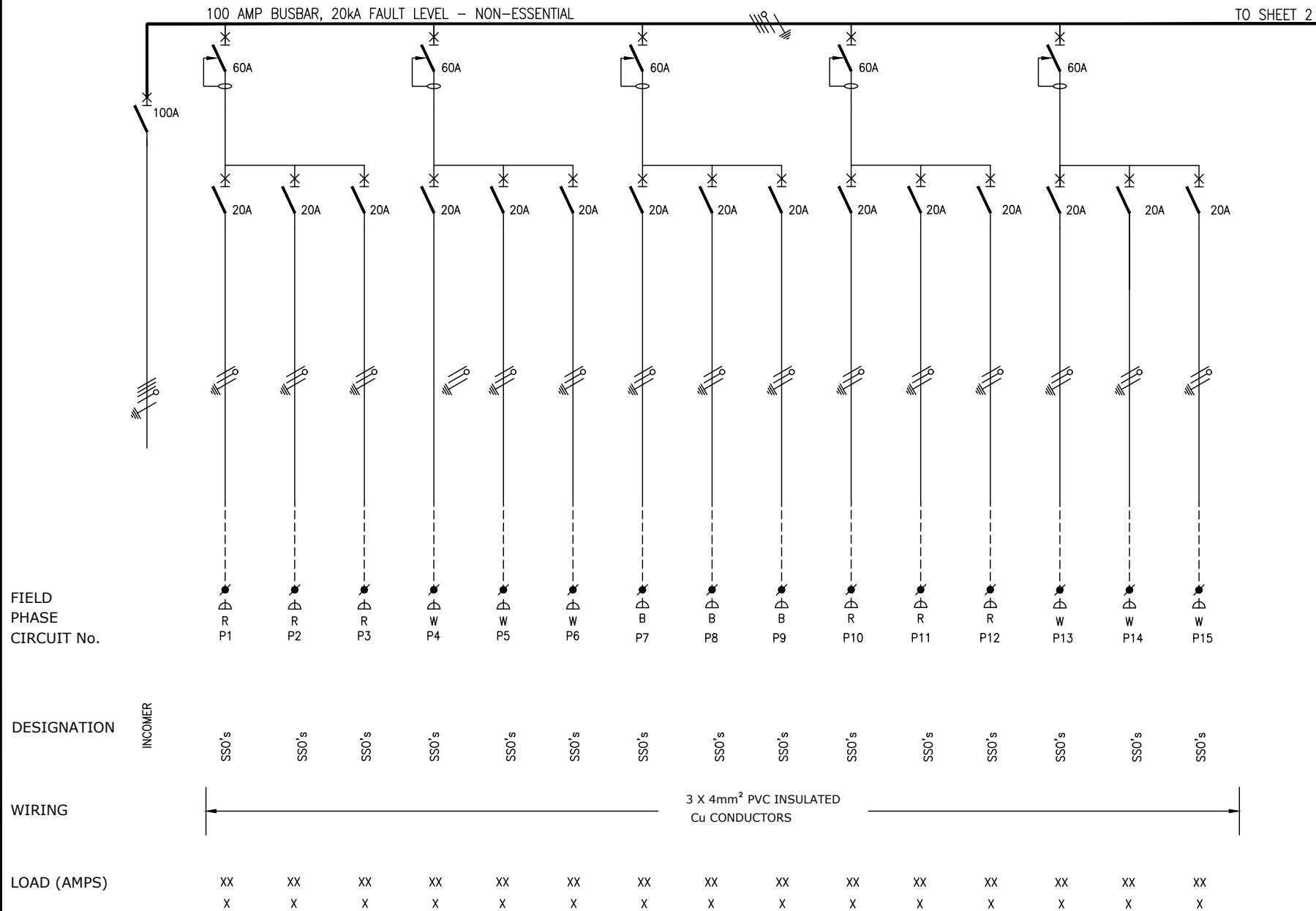


- 1) DROPPERS/TAILS TO BE RATED FOR FULL FLT LET THROUGH.
- 2) HARNESSED WIRING TO BE DERATED.
- 3) TUFFNOL BRACES ARE NOT TO BE USED ABOVE 10kA.
- 4) COPPER BUSBARS TO BE CONTINUOUS RATED.
- 5) ALL OUTGOING CIRCUIT BREAKERS TO BE FITTED WITH COPPER TAILS TO FACILITATE CABLE TERMINATIONS IN THE CABLE COMPARTMENT AND NOT ON THE CIRCUIT BREAKER.
- 6) COPPER TAILS FROM DROPPER BUSBAR AND OUTGOING COPPER TAILS TO BE ADEQUATELY BRACED FOR FAULT LEVEL AND SHROUDED WITH HEAT SHRINK.
- 7) ALL CIRCUIT BREAKERS TO BE FITTED WITH TERMINAL SHIELD ON LIVE AND LOAD SIDES.
- 8) ENCLOSURE TO BE IP54.
- 9) PHASING RWB, TOP TO BOTTOM, LEFT TO RIGHT, BACK TO FRONT.
- 10) INTERNAL TEMP. TO BE LIMITED TO 5° ABOVE AMBIENT, MAX 40°C.
- 11) ALL CIRCUITS TO BE LABELED.
- 12) 25% SPARE SPACE. SPARE SPACES ARE TO BE FITTED WITH COPPER BUSBAR TAILS CONNECTED TO DROPPER BUSBARS TO ALLOW INSTALLATION OF CIRCUIT BREAKERS WITH A MINIMAL SHUTDOWN PERIOD.

| | |
|--------------------|-----------------|
| INCOMING CABLE | -TOP |
| OUTGOING CIRCUITS | -TOP |
| COLOUR | -ORANGE / RED |
| MOUNTING | -FLOOR STANDING |
| ACCESS | -FRONT |
| PROTECTIVE DEVICES | -SCHNEIDER |



NOT WITHSTANDING ANYTHING TO THE CONTRARY, ALL RIGHTS RESERVED. NO PART OF THIS DRAWING MAY BE REPRODUCED IN ANY MATERIAL FORM (INCLUDING PHOTOCOPYING OR STORING IN ANY MEDIUM OR BY ELECTRONIC MEANS WHETHER OR NOT TRANSIENTLY OR INCIDENTALLY TO SOME OTHER USE OF THIS DRAWING) AND ALSO, THIS DRAWING MAY NOT BE USED FOR ANY PURPOSE OR REASON OTHER THAN FOR WHICH IT WAS ORIGINALLY ISSUED, WITHOUT THE WRITTEN PERMISSION OF IBUYA CONSULTING ENGINEERS.

| | | | | | | | | | |
|-----|----------------|----|---------|-------|-----------------------|-------------|--------|-------------------|-------|
| | | | | | ENGINEER | DRAWN | DATE: | SCALE: n.t.s | CHKD. |
| | | | | | M.Kambaran | VT | Nov'17 | PAPER SIZE: A3 | |
| | | | | | PROJECT No. | DRAWING No. | SHEET: | | REV. |
| 0 | Original Issue | CG | 28/2/20 | MK | 17052 | 411 | 1 of 5 | | 0 |
| REV | DESCRIPTION | BY | DATE | CHKD. | File Name : 17052_403 | Lyr: | | | |

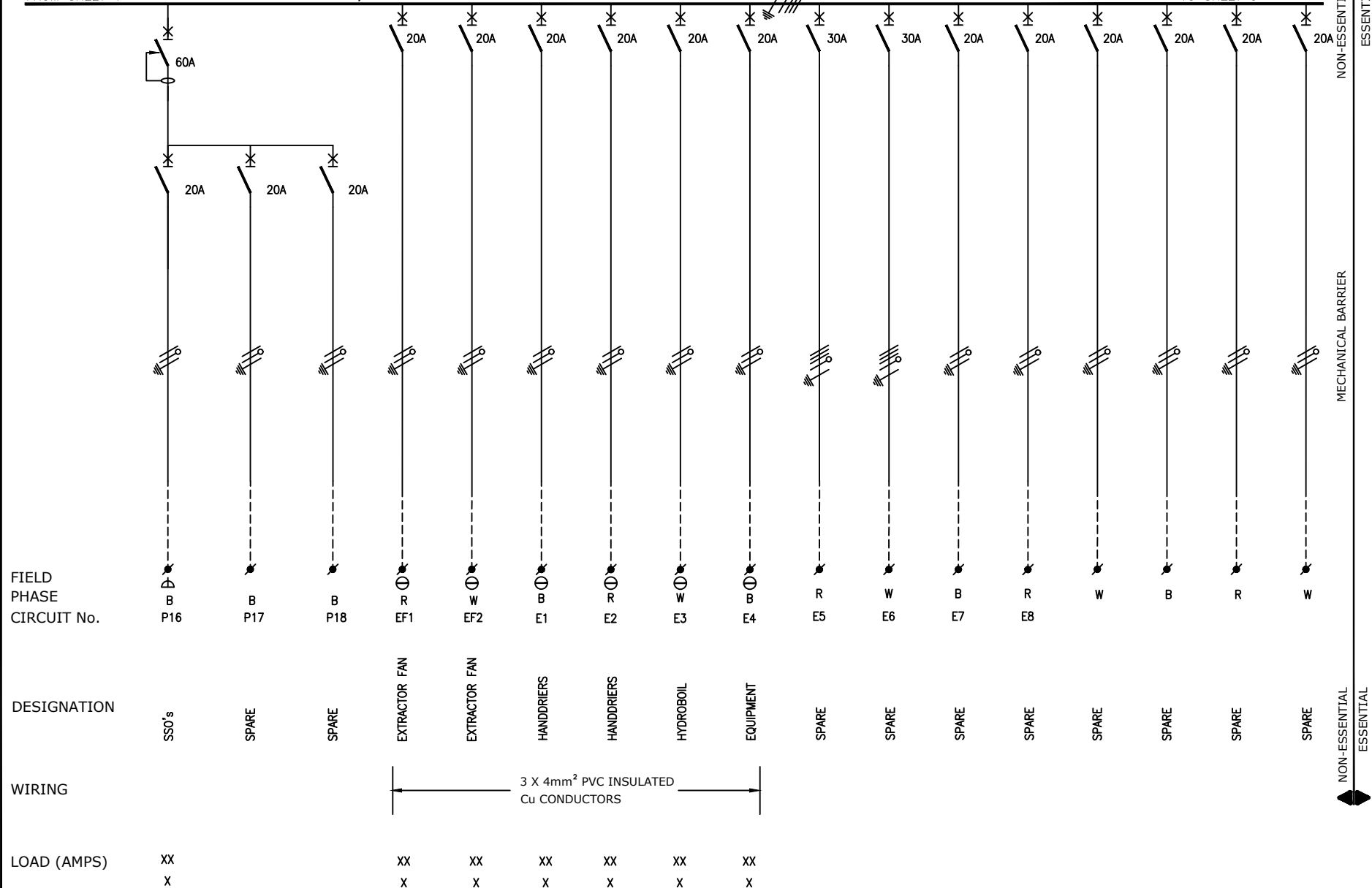
| | |
|----------------|---|
| TITLE | Government Printing Works Refurbishment |
| DRAWING TITLE: | OFFICE DB DB-03/03E SINGLE LINE DIAGRAM |



FROM SHEET 1


100 AMP BUSBAR, 20kA FAULT LEVEL – NON-ESSENTIAL

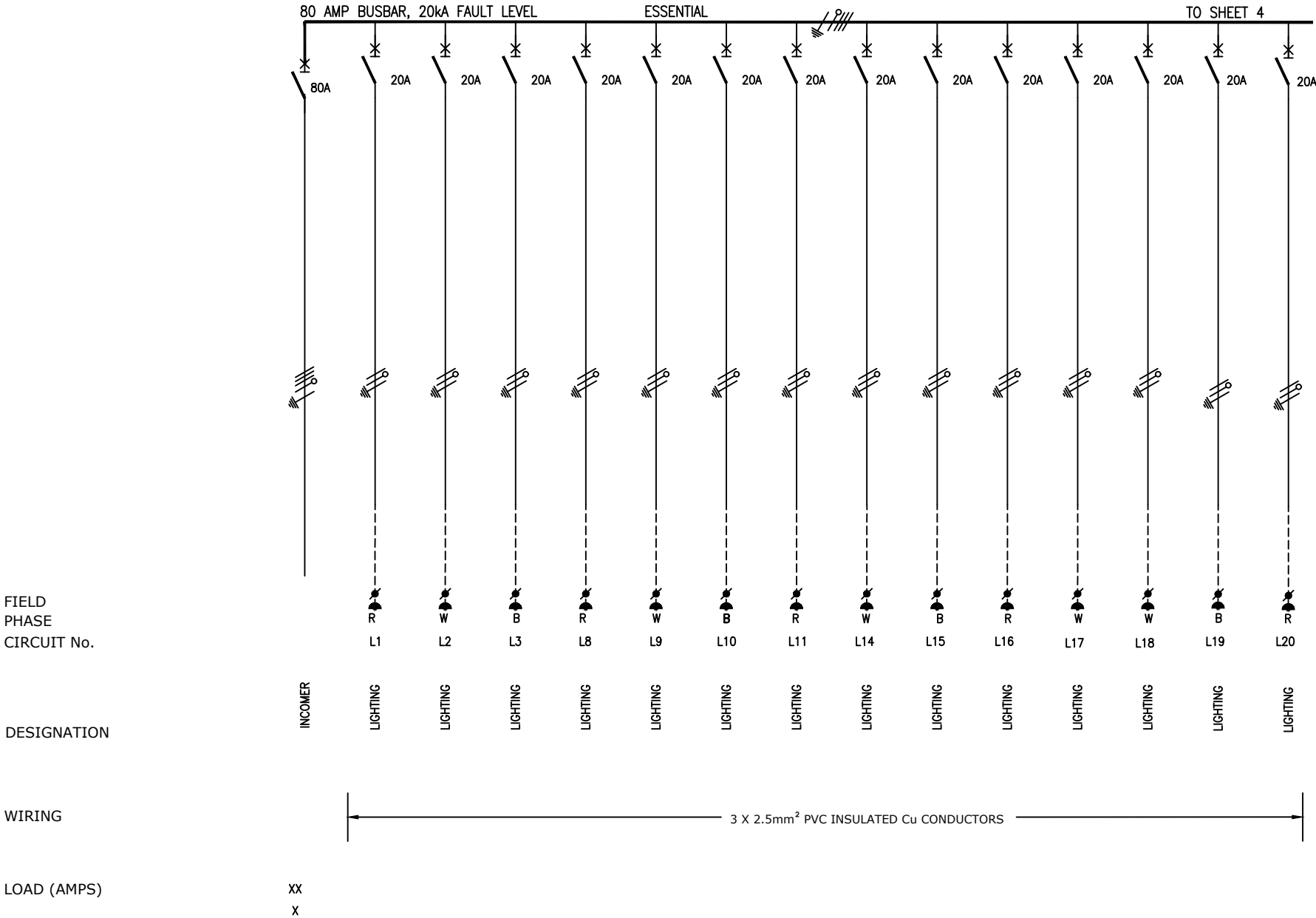
TO SHEET 3




MECHANICAL BARRIER

NON-ESSENTIAL
ESSENTIAL

| | | | | | | | | | | | | | | | | | | | | |
|-----|----------------|--|--|----|------------|-------|----------------------------|--------------------|------------------|--|---|--|--|--|--|--|--|--|--|--|
| | | | | | | | | | | NOT WITHSTANDING ANYTHING TO THE CONTRARY, ALL RIGHTS RESERVED. NO PART OF THIS DRAWING MAY BE REPRODUCED IN ANY MATERIAL FORM (INCLUDING PHOTOCOPYING OR STORING IN ANY MEDIUM OR BY ELECTRONIC MEANS WHETHER OR NOT TRANSIENTLY OR INCIDENTALLY TO SOME OTHER USE OF THIS DRAWING) AND ALSO, THIS DRAWING MAY NOT BE USED FOR ANY PURPOSE OR REASON OTHER THAN FOR WHICH IT WAS ORIGINALLY ISSUED, WITHOUT THE WRITTEN PERMISSION OF IBUYA CONSULTING ENGINEERS. | | | | | | | | | | |
| | | | | | ENGINEER | DRAWN | DATE: | SCALE: n.t.s | CHKD. | TITLE Government Printing Works Refurbishment | | | | | | | | | | |
| | | | | | M.Kambaran | VT | Nov'17 | PAPER SIZE: A3 | | | | | | | | | | | | |
| 0 | Original Issue | | | CG | 28/2/20 | MK | PROJECT No. 17052 | DRAWING No. 411 | SHEET: 2 of 5 | REV. 0 | DRAWING TITLE: OFFICE DB DB-03/03E SINGLE LINE DIAGRAM | | | | | | | | | |
| REV | DESCRIPTION | | | BY | DATE | CHKD. | File Name : 17052_403 Lyr: | | | | | | | | | | | | | |
| | | | | | | | | | |  | | | | | | | | | | |



| | | | | | | | | | | | | | | | | | | | |
|-----|----------------|--|----|---------|------------|----------------------------|------------------------|----------------------|---------------|--|--|--|--|--|--|--|--|--|--|
| | | | | | | | | | | NOT WITHSTANDING ANYTHING TO THE CONTRARY, ALL RIGHTS RESERVED. NO PART OF THIS DRAWING MAY BE REPRODUCED IN ANY MATERIAL FORM (INCLUDING PHOTOCOPYING OR STORING IN ANY MEDIUM OR BY ELECTRONIC MEANS WHETHER OR NOT TRANSIENTLY OR INCIDENTLY TO SOME OTHER USE OF THIS DRAWING) AND ALSO, THIS DRAWING MAY NOT BE USED FOR ANY PURPOSE OR REASON OTHER THAN FOR WHICH IT WAS ORIGINALLY ISSUED, WITHOUT THE WRITTEN PERMISSION OF IBUYA CONSULTING ENGINEERS. | | | | | | | | | |
| | | | | | ENGINEER | DRAWN | DATE: | SCALE: n.t.s | CHKD. | TITLE Government Printing Works Refurbishment | | | | | | | | | |
| | | | | | M.Kambaran | VT | Nov'17 | PAPER SIZE: A3 | | | | | | | | | | | |
| 0 | Original Issue | | CG | 28/2/20 | MK | PROJECT No. 17052 | DRAWING No. 411 | SHEET: 3 of 5 | REV. 0 | DRAWING TITLE: OFFICE DB DB-03/03E SINGLE LINE DIAGRAM | | | | | | | | | |
| REV | DESCRIPTION | | BY | DATE | CHKD. | File Name : 17052_403 Lyr: | | | | | | | | | | | | | |

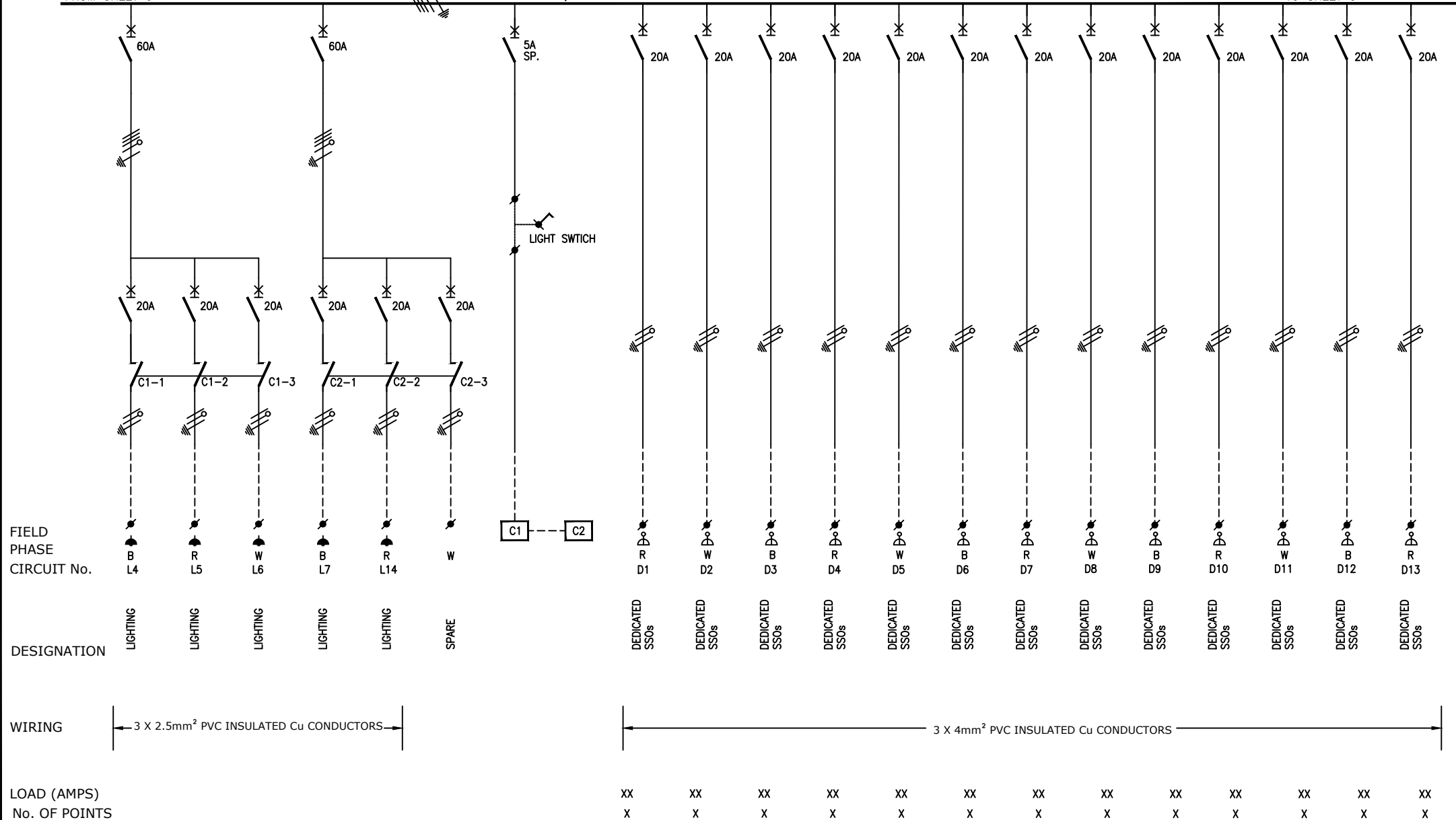



LDM
Solutions For The Built Environment

FROM SHEET 3

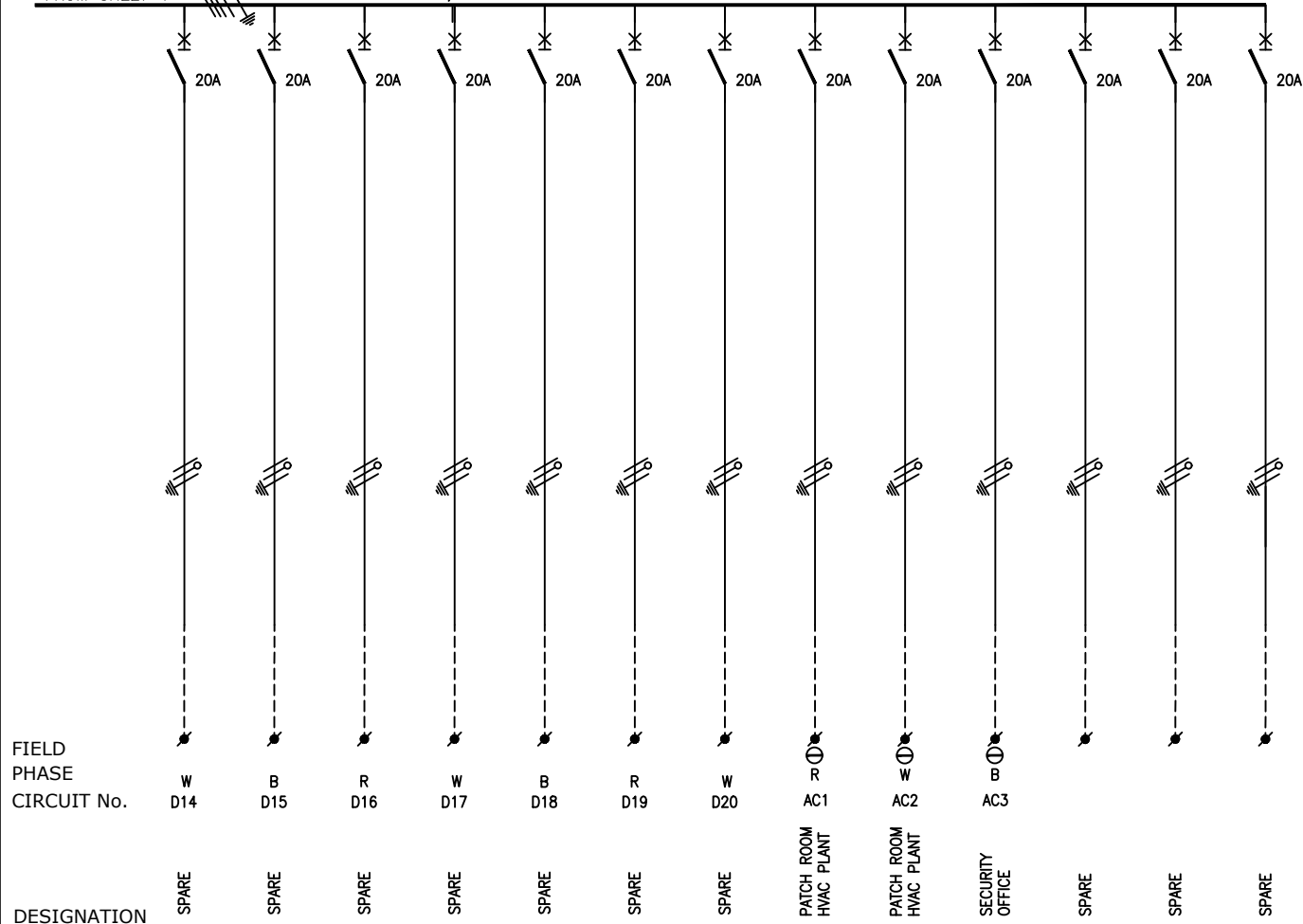
80 AMP BUSBAR, 20KA FAULT LEVEL - ESSENTIAL

TO SHEET 5



| | | | | | | | | | |
|----------------------------|----------------|----|---------|-------|--|-------------|--------|-------------|-------|
| | | | | | NOT WITHSTANDING ANYTHING TO THE CONTRARY, ALL RIGHTS RESERVED. NO PART OF THIS DRAWING MAY BE REPRODUCED IN ANY MATERIAL FORM (INCLUDING PHOTOCOPYING OR STORING IN ANY MEDIUM OR BY ELECTRONIC MEANS WHETHER OR NOT TRANSIENTLY OR INCIDENTLY TO SOME OTHER USE OF THIS DRAWING) AND ALSO, THIS DRAWING MAY NOT BE USED FOR ANY PURPOSE OR REASON OTHER THAN FOR WHICH IT WAS ORIGINALLY ISSUED, WITHOUT THE WRITTEN PERMISSION OF IBUYA CONSULTING ENGINEERS. | | | | |
| | | | | | ENGINEER | DRAWN | DATE: | SCALE: | CHKD. |
| | | | | | M.Kambaran | VT | Nov'17 | n.t.s | |
| | | | | | PROJECT No. | DRAWING No. | SHEET: | PAPER SIZE: | REV. |
| | | | | | 17052 | 411 | 4 of 5 | A3 | 0 |
| 0 | Original Issue | CG | 28/2/20 | MK | DRAFTING TITLE: | | | | |
| REV | DESCRIPTION | BY | DATE | CHKD. | OFFICE DB DB-03/03E SINGLE LINE DIAGRAM | | | | |
| File Name : 17052_403 Lyr: | | | | | <div>  </div> | | | | |

FROM SHEET 4 80 AMP BUSBAR, 20kA FAULT LEVEL - ESSENTIAL



WIRING

3 X 4mm² PVC INSULATED
Cu CONDUCTORS

LOAD (AMPS)

XX XX XX
X X X

NOT WITHSTANDING ANYTHING TO THE CONTRARY, ALL RIGHTS RESERVED. NO PART OF THIS DRAWING MAY BE REPRODUCED IN ANY MATERIAL FORM (INCLUDING PHOTOCOPYING OR STORING IN ANY MEDIUM OR BY ELECTRONIC MEANS WHETHER OR NOT TRANSIENTLY OR INCIDENTLY TO SOME OTHER USE OF THIS DRAWING) AND ALSO, THIS DRAWING MAY NOT BE USED FOR ANY PURPOSE OR REASON OTHER THAN FOR WHICH IT WAS ORIGINALLY ISSUED, WITHOUT THE WRITTEN PERMISSION OF IBUYA CONSULTING ENGINEERS.

| | | | | | | | | |
|-----|----------------|----|---------|-------------|-----------------------|--------|-------------|-------|
| | | | | ENGINEER | DRAWN | DATE: | SCALE: | CHKD. |
| | | | | M.Kambaran | VT | Nov'17 | n.t.s | |
| | | | | PROJECT No. | DRAWING No. | SHEET: | PAPER SIZE: | REV. |
| 0 | Original Issue | CG | 28/2/20 | MK | 17052 | 411 | 5 of 5 | 0 |
| REV | DESCRIPTION | BY | DATE | CHKD. | File Name : 17052_403 | Lyr: | | |

| |
|---|
| TITLE |
| Government Printing Works Refurbishment |
| DRAWING TITLE: |
| OFFICE DB DB-03/03E SINGLE LINE DIAGRAM |

